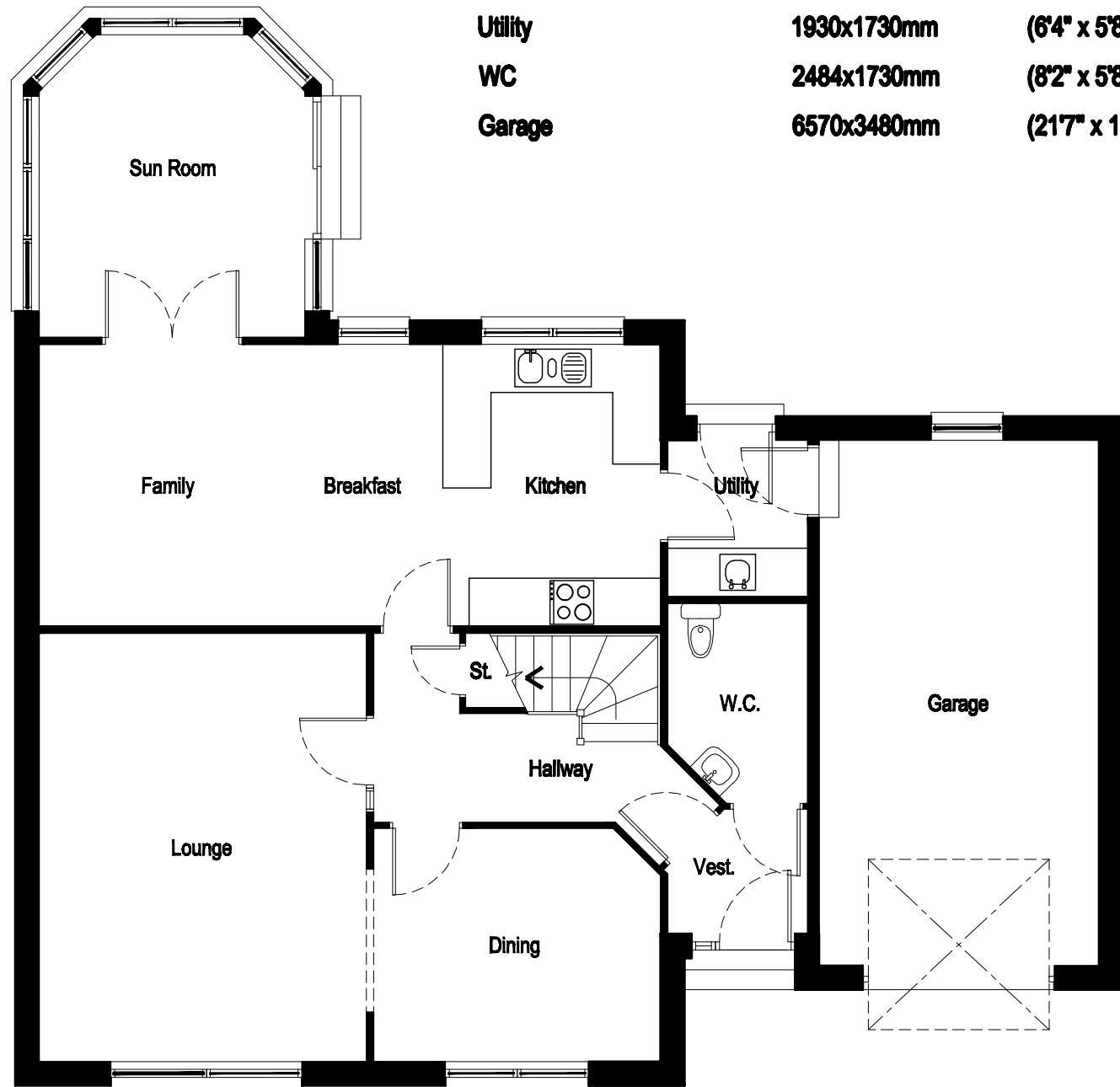


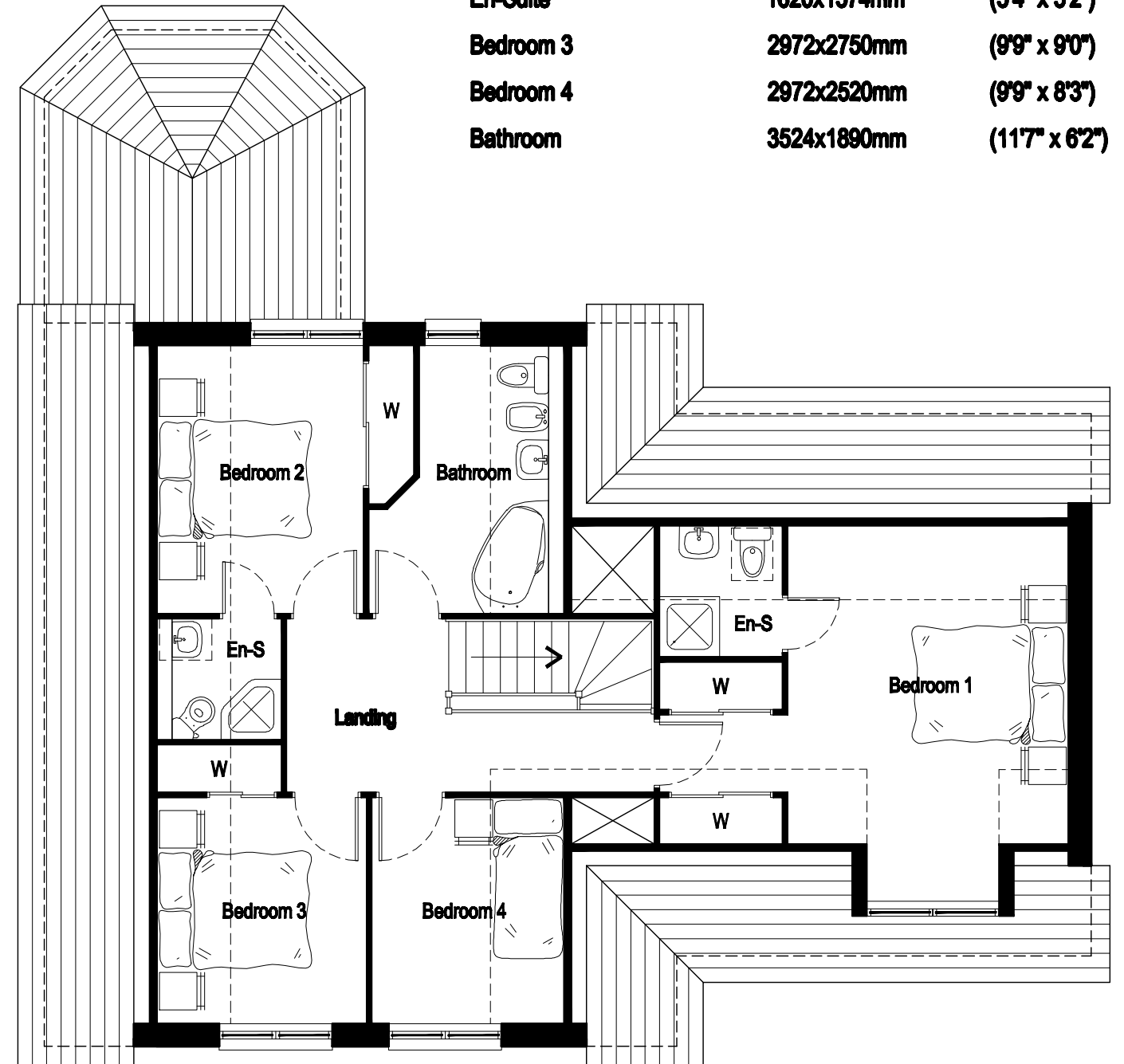
Laburnam Room Sizes:-

Lounge	5346x4080mm	(17'6" x 13'5")
Dining	3570x2900mm	(11'9" x 9'6")
Family/Breakfast/Kitchen	7770x3504mm	(25'6" x 11'6")
Sunroom	3770x3308mm	(12'4" x 10'10")
Utility	1930x1730mm	(6'4" x 5'8")
WC	2484x1730mm	(8'2" x 5'8")
Garage	6570x3480mm	(21'7" x 11'7")



Ground Floor Plan

Bedroom 1	4190x3700mm	(13'9" x 12'2")
Dressing	1670x998mm	(5'6" x 3'3")
En-Suite	1710x1600mm	(5'7" x 5'3")
Bedroom 2	2924x2900mm	(9'7" x 9'6")
En-Suite	1620x1574mm	(5'4" x 5'2")
Bedroom 3	2972x2750mm	(9'9" x 9'0")
Bedroom 4	2972x2520mm	(9'9" x 8'3")
Bathroom	3524x1890mm	(11'7" x 6'2")



First Floor Plan